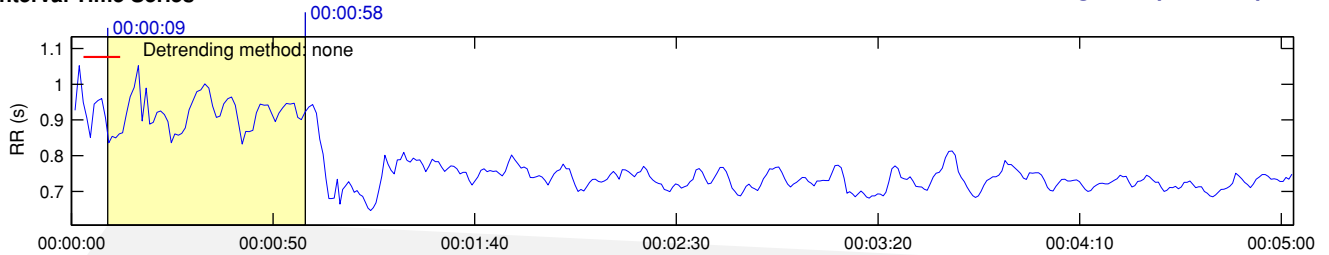
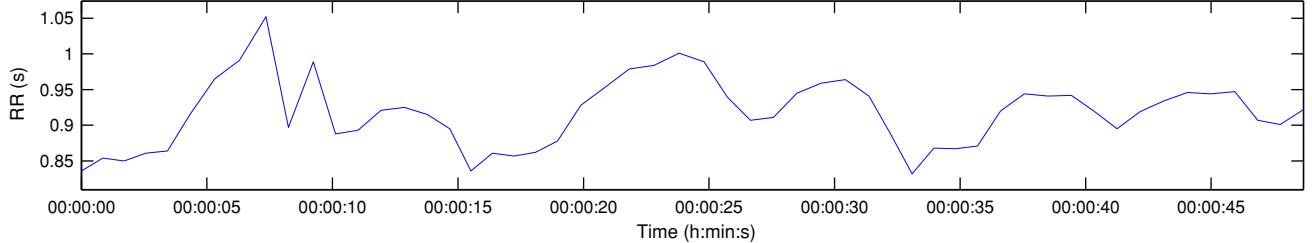


RR Interval Time Series

Results for single samples: sample 1/3



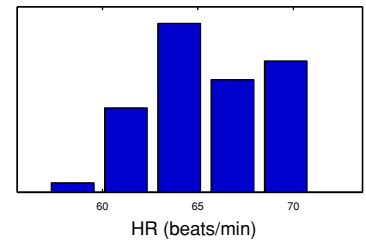
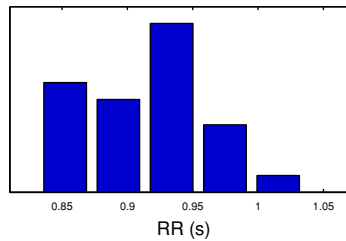
Selected RR Series



Time-Domain Results

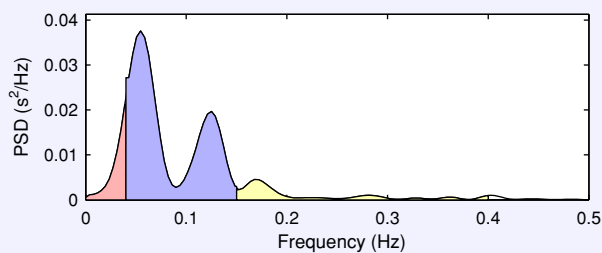
Variable	Units	Value
Mean RR*	(ms)	916.9
STD RR (SDNN)	(ms)	47.8
Mean HR*	(1/min)	65.61
STD HR	(1/min)	3.39
RMSSD	(ms)	39.4
NN50	(count)	10
pNN50	(%)	18.9
RR triangular index		9.000
TINN	(ms)	195.0

Distributions*



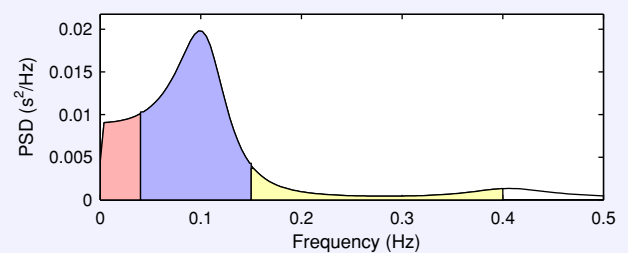
Frequency-Domain Results

FFT spectrum (Welch's periodogram: 256 s window with 50% overlap)



Frequency Band	Peak (Hz)	Power (ms ²)	Power (%)	Power (n.u.)
VLF (0-0.04 Hz)	0.0391	247	11.0	
LF (0.04-0.15 Hz)	0.0547	1771	78.7	88.4
HF (0.15-0.4 Hz)	0.1680	232	10.3	11.6
Total		2250		
LF/HF		7.648		

AR Spectrum (AR model order = 16, not factorized)

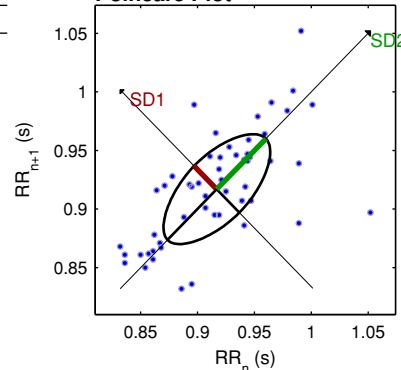


Frequency Band	Peak (Hz)	Power (ms ²)	Power (%)	Power (n.u.)
VLF (0-0.04 Hz)	0.0391	366	17.9	
LF (0.04-0.15 Hz)	0.0977	1454	70.9	86.4
HF (0.15-0.4 Hz)	0.1523	230	11.2	13.6
Total		2050		
LF/HF		6.331		

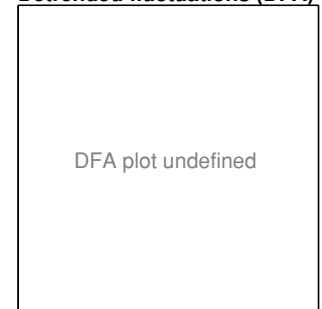
Nonlinear Results*

Variable	Units	Value
Poincare plot		
SD1	(ms)	28.2
SD2	(ms)	61.1
Recurrence plot		
Mean line length (Lmean)	(beats)	-
Max line length (Lmax)	(beats)	-
Recurrence rate (REC)	(%)	-
Determinism (DET)	(%)	-
Shannon Entropy (ShanEn)		-
Other		
Approximate entropy (ApEn)		-
Sample entropy (SampEn)		-
Detrended fluctuations (DFA): α1		-
Detrended fluctuations (DFA): α2		-
Correlation dimension (D2)		-

Poincare Plot



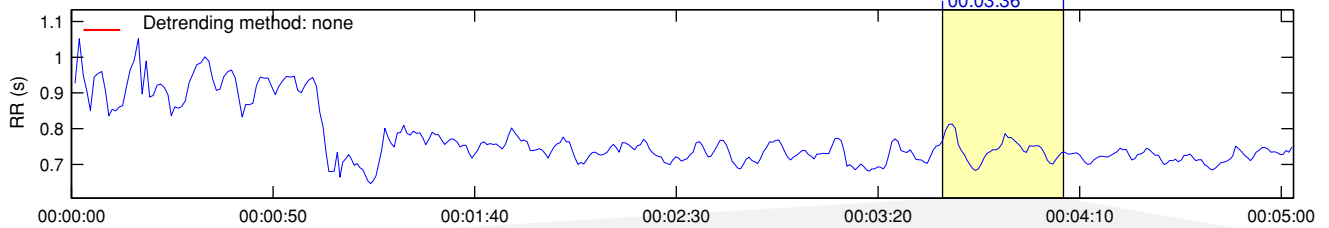
Detrended fluctuations (DFA)



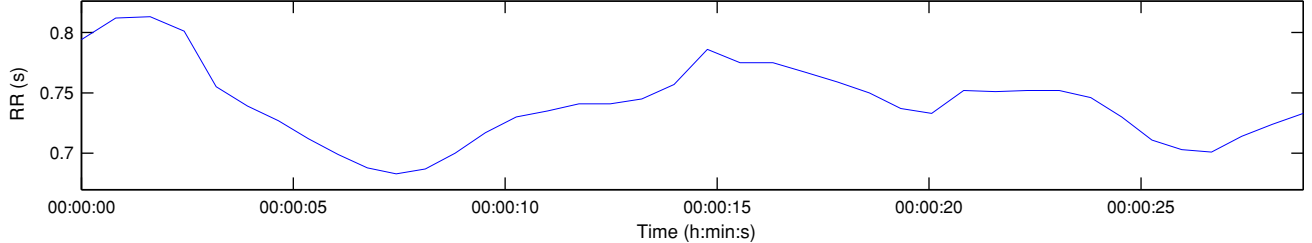
*Results are calculated from the non-detrended selected RR series.

RR Interval Time Series

Results for single samples: sample 2/3



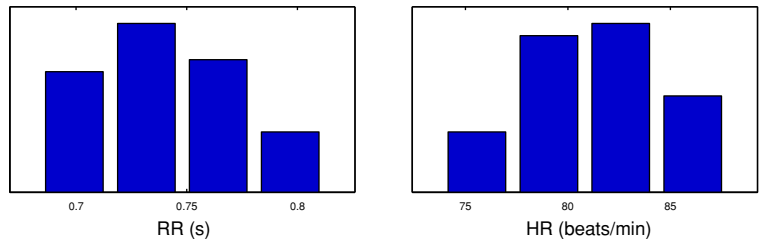
Selected RR Series



Time-Domain Results

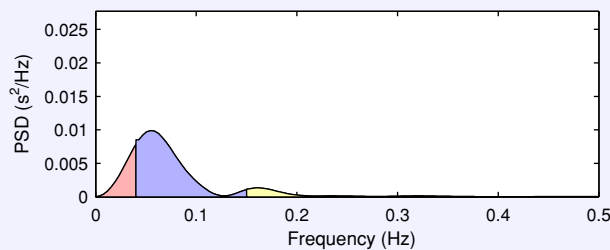
Variable	Units	Value
Mean RR*	(ms)	740.7
STD RR (SDNN)	(ms)	33.0
Mean HR*	(1/min)	81.16
STD HR	(1/min)	3.58
RMSSD	(ms)	13.5
NN50	(count)	0
pNN50	(%)	0.0
RR triangular index		6.667
TINN	(ms)	110.0

Distributions*



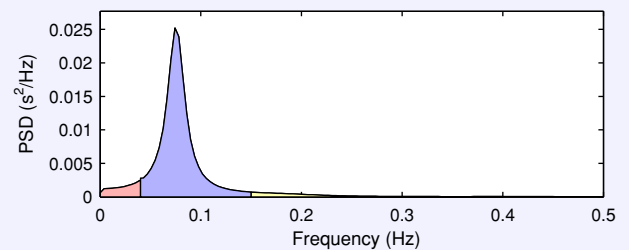
Frequency-Domain Results

FFT spectrum (Welch's periodogram: 256 s window with 50% overlap)



Frequency Band	Peak (Hz)	Power (ms ²)	Power (%)	Power (n.u.)
VLF (0-0.04 Hz)	0.0391	118	18.2	
LF (0.04-0.15 Hz)	0.0547	464	71.9	87.9
HF (0.15-0.4 Hz)	0.1602	64	9.9	12.1
Total		646		
LF/HF		7.249		

AR Spectrum (AR model order = 16, not factorized)

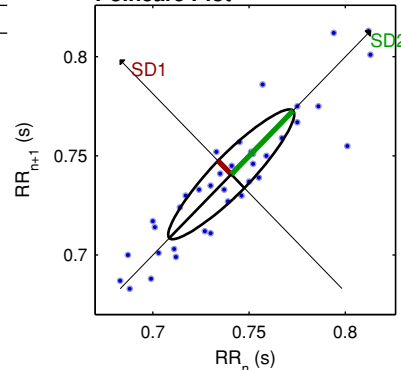


Frequency Band	Peak (Hz)	Power (ms ²)	Power (%)	Power (n.u.)
VLF (0-0.04 Hz)	0.0391	61	7.3	
LF (0.04-0.15 Hz)	0.0742	732	87.3	94.2
HF (0.15-0.4 Hz)	0.1523	45	5.4	5.8
Total		839		
LF/HF		16.243		

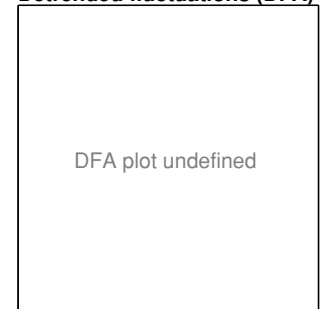
Nonlinear Results*

Variable	Units	Value
Poincare plot		
SD1	(ms)	9.7
SD2	(ms)	45.5
Recurrence plot		
Mean line length (Lmean)	(beats)	-
Max line length (Lmax)	(beats)	-
Recurrence rate (REC)	(%)	-
Determinism (DET)	(%)	-
Shannon Entropy (ShanEn)		-
Other		
Approximate entropy (ApEn)		-
Sample entropy (SampEn)		-
Detrended fluctuations (DFA): α1		-
Detrended fluctuations (DFA): α2		-
Correlation dimension (D2)		-

Poincare Plot



Detrended fluctuations (DFA)



*Results are calculated from the non-detrended selected RR series.